

THE RESULTS MEASUREMENT FRAMEWORK (2016-2025)

INCREASING THE BANK'S DEVELOPMENT
IMPACT, DELIVERING THE HIGH 5S



ADF-14 Second Replenishment Meeting

June – July, 2016
Abidjan, Côte d'Ivoire

Outline

- 1 Why this new RMF?
- 2 How will we increase our impact?
- 3 How will we strengthen accountability?
- 4 What are the next steps?

Outline

- 1 Why this new RMF?
- 2 How will we increase our impact?
- 3 How will we strengthen accountability?
- 4 What are the next steps?

We aim to transform Africa by 2025






And are setting ambitious targets for ourselves



Scaling up the Bank's capacity to deliver

Five foundations to deliver five goals

What the Bank will deliver

-  Light up & power Africa
-  Feed Africa
-  Industrialise Africa
-  Integrate Africa
-  Improve the quality of life



How it will deliver it

-  Move closer to our clients to enhance delivery
-  Reconfigure HQ to support the regions to deliver better outcomes
-  Strengthen the performance culture to attract and maintain talent
-  Streamline business processes to promote efficiency and effectiveness
-  Improve financial performance and increase development impact

The RMF is a management tool

Designed to help the Bank deliver on the High 5s

- ▶ Increase impact on development
- ▶ Stretch the Bank's performance
- ▶ Track performance over time
- ▶ Communicate corporate priorities
- ▶ Draw lessons from the past to guide the future

Outline

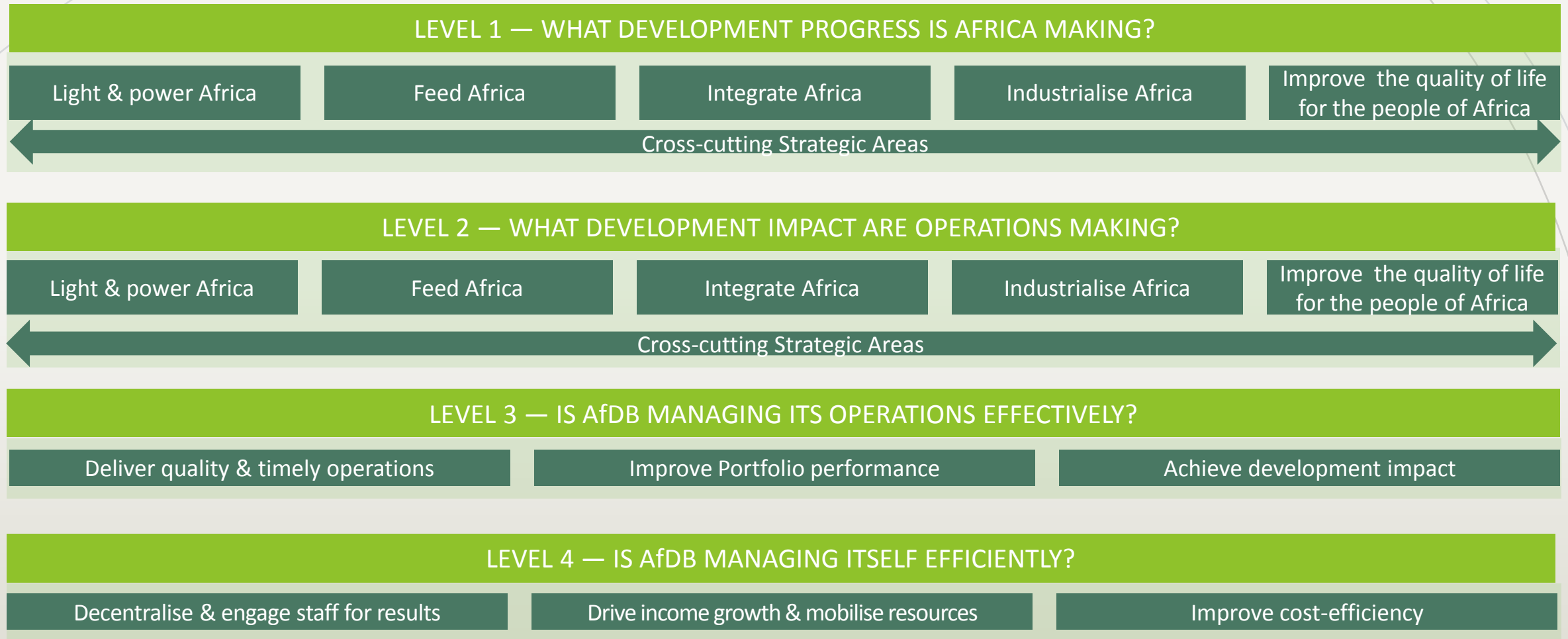
- 1 Why this new RMF?
- 2 How will we increase our impact?
- 3 How will we strengthen accountability?
- 4 What are the next steps?

Outline

- 1 Why this new RMF?
- 2 How will we increase our impact?
- 3 How will we strengthen accountability?
- 4 What are the next steps?

Increasing strategic focus on the High 5s

We have re-engineered level 1 and level 2



Improving delivery of corporate priorities

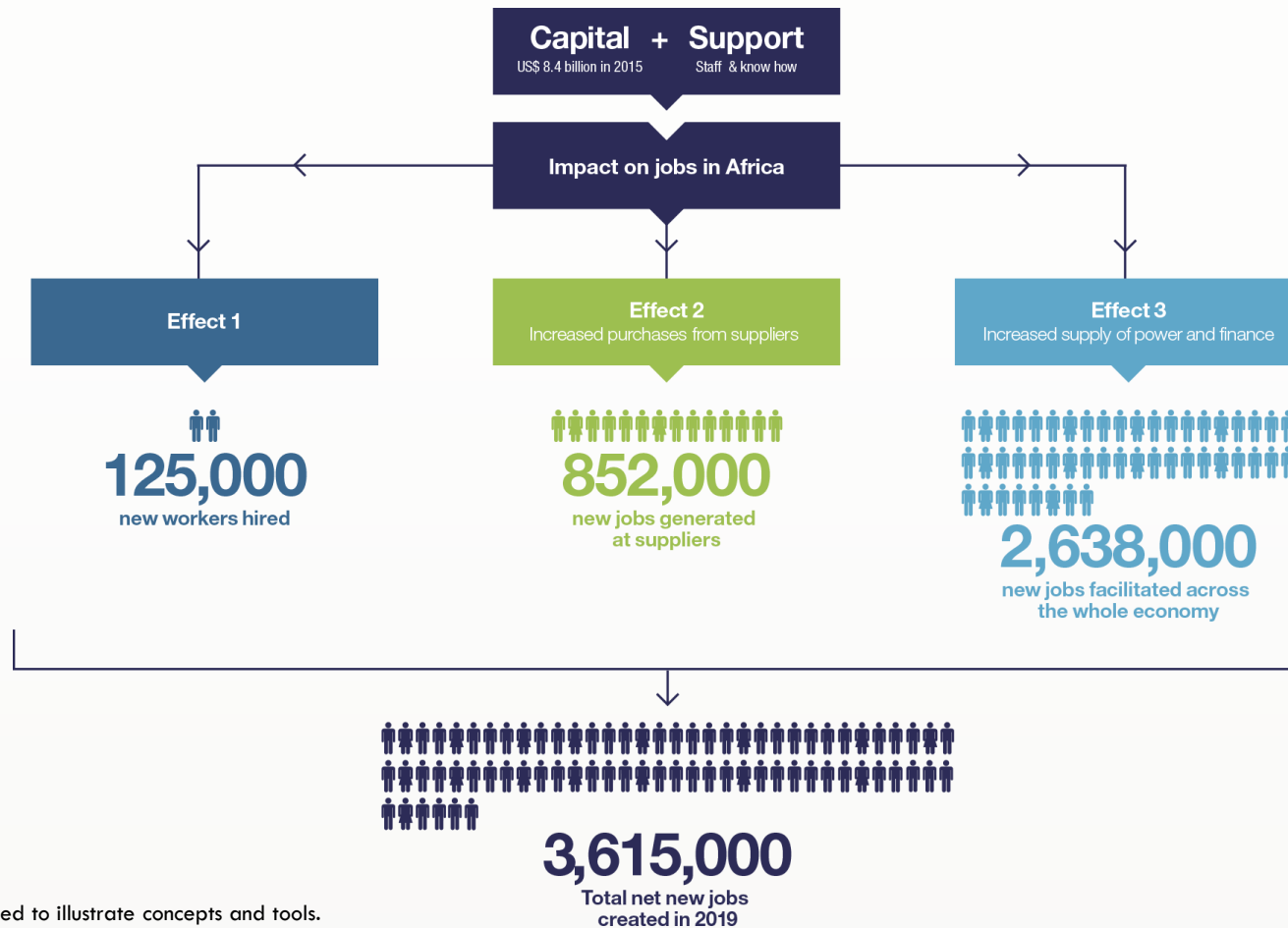
Special focus on key drivers of performance



Measuring our development impact

We will track jobs created & impact on growth

Development Impact Approach



Capturing **private sector** contributions

We are strengthening existing tracking tools

- Clarify the logic of interventions of private sector operations
- Informing project preparation with ex-ante data
- Tracking results during implementation
- Providing clear results information at completion

Promoting **gender equality** in all operations

We are strengthening our focus on gender

■ Stronger gender metrics in RMF:

Level 1: Measures gender disparities across the continent

Level 2: Measures the impact on women & girls
Indicators are disaggregated by sex

Level 3: Tracks how gender is integrated in project design

Level 4: Targets for share of women as managers and professional staff

■ The new Gender Marker System will increase our impact on gender equality

Outline

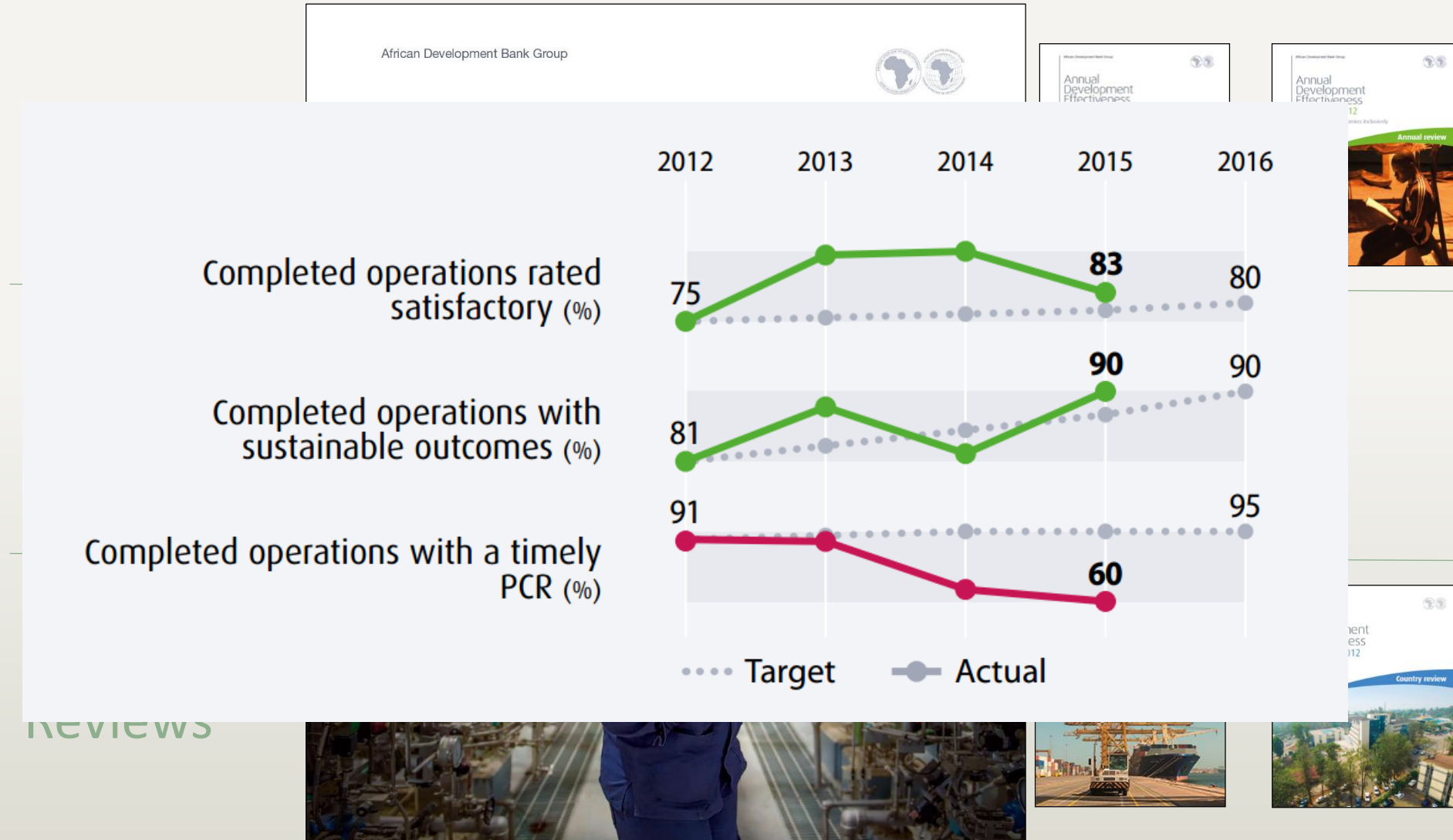
- 1 Why this new RMF?
- 2 How will we increase our impact?
- 3 How will we strengthen accountability?
- 4 What are the next steps?

Outline

- 1 Why this new RMF?
- 2 How will we increase our impact?
- 3 How will we strengthen accountability?
- 4 What are the next steps?

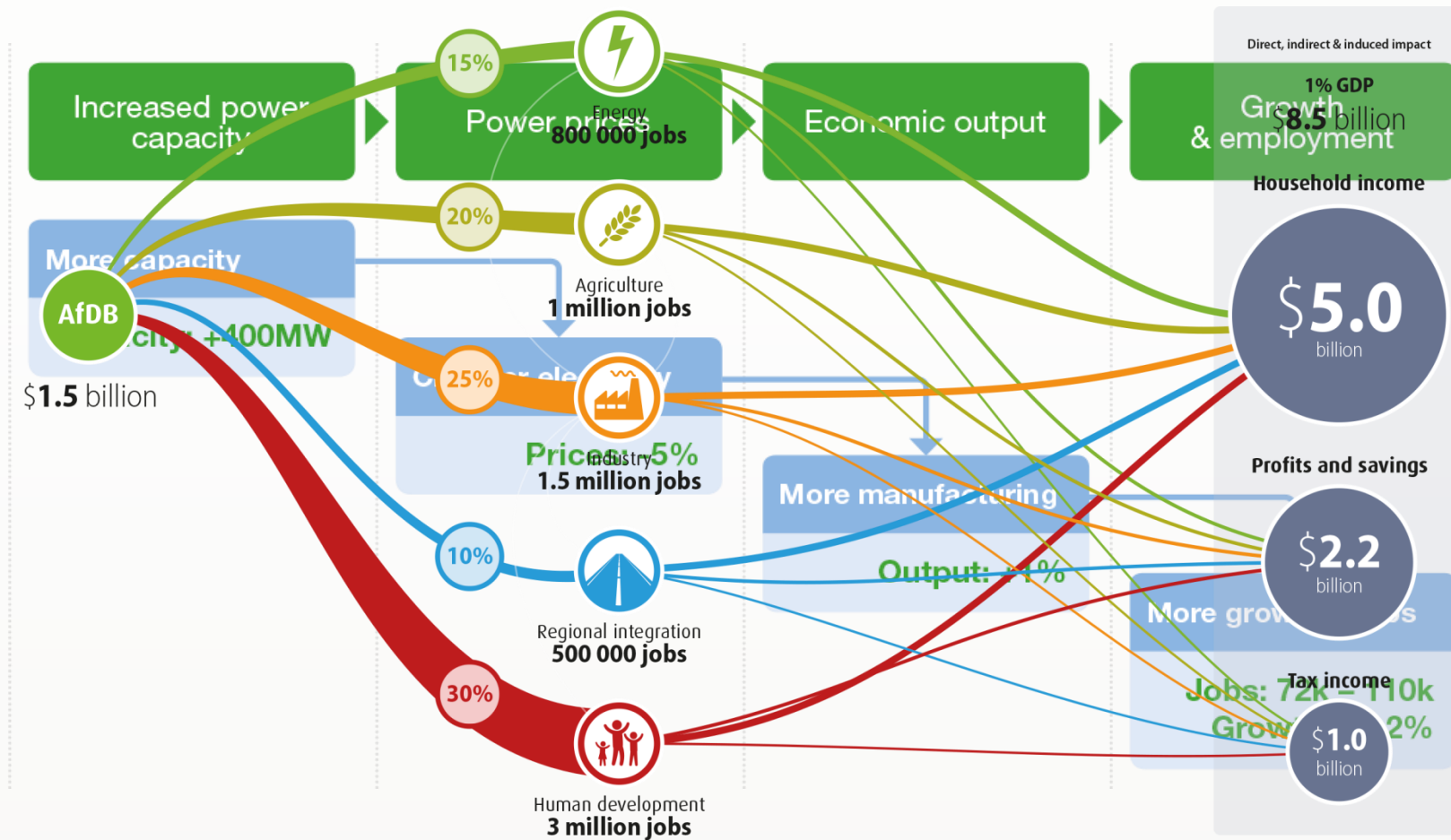
The ADER is how we account on performance

We are building a strong body of evidence...



Better understanding of development impact of how to become more effective

Measuring AfDB's Impact in East Africa



Attention to cross-cutting strategic issues

RMF reports on key dimensions

■ Stronger accountability on results in **fragile situations**

Disaggregated results data by fragile states

Human interest stories

■ New metrics on **climate change** in RMF:

Levels 1 & 2 track renewable energy and the impact on climate-resilience

Levels 3 & 4 measure climate change mainstreaming and financing

■ Focus on **governance** outcomes

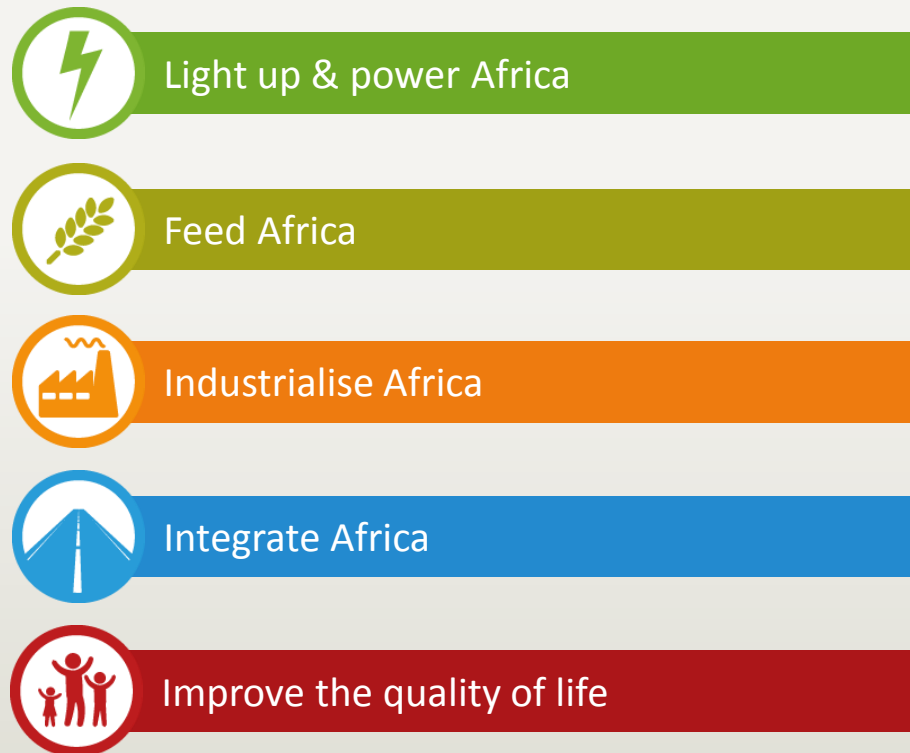
Report on data from African indexes on institutional effectiveness

Impact of policy-based lending on quality of public sector management

Dedicated reporting for ADF-14

Focusing on key development outcomes

Priority Areas

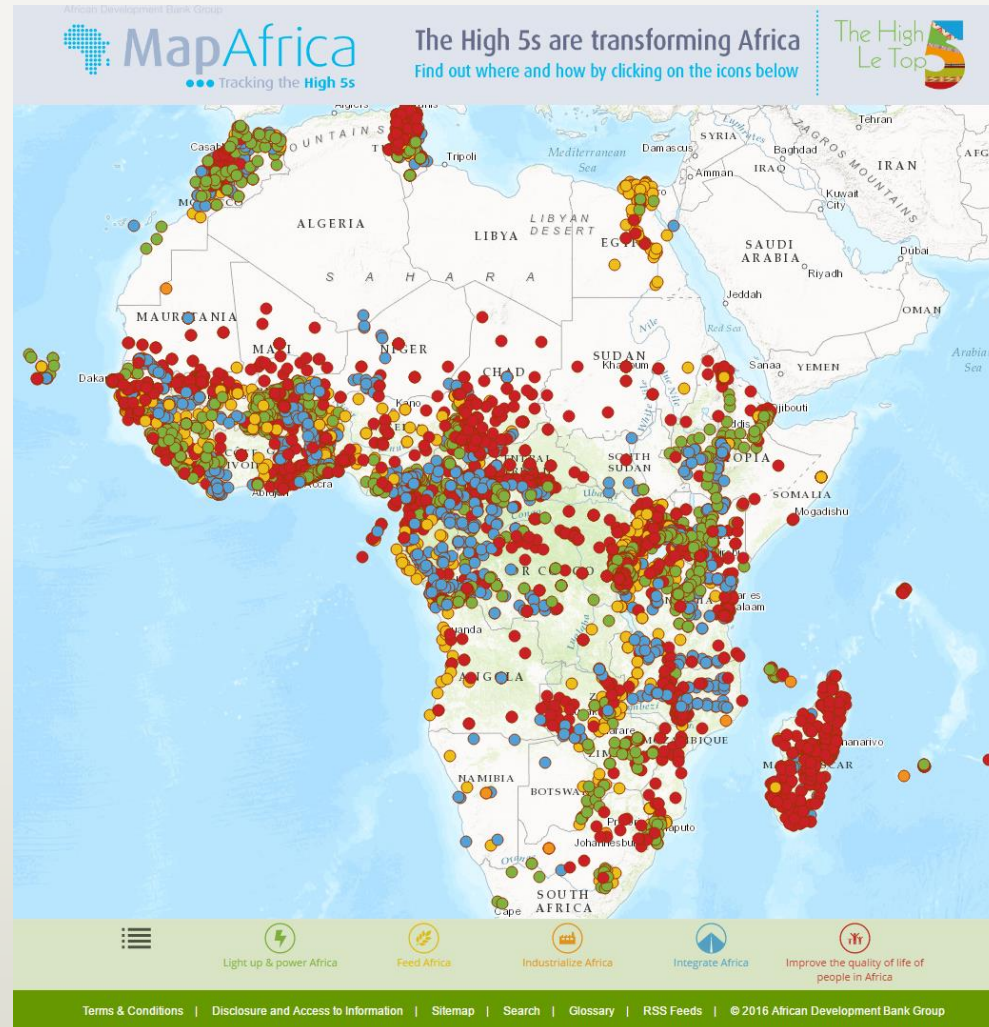


What ADF will deliver

23.6m people newly connected	+ 4,600 MW installed
280,000 ha of land irrigated	≈ 50 m beneficiaries of improved technology
1.4 million MSME created	17.9 million microfinance and private sector beneficiaries
73 million with improved access to roads	16 million trained to road maintenance and safety
3 million jobs created	8 million people with better access to water and sanitation

MapAfrica tracks our development impact

It makes information available to all



AfDB in the **top league** on transparency

According to Publish What You Fund



Publish What You Fund 2016
ranking of 46 development organisations

Outline

- 1 Why this new RMF?
- 2 How will we increase our impact?
- 3 How will we strengthen accountability?
- 4 What are the next steps?

Outline

- 1 Why this new RMF?
- 2 How will we increase our impact?
- 3 How will we strengthen accountability?
- 4 What are the next steps?

The Consultative Process

A Bank Group Paper

June

1st consultative draft is released

June-July

Draft is presented & discussed at:

- 2nd ADF meeting
- CODE Meeting

September

2nd Draft with baselines and targets

December

Final RMF to be approved by the Board

A learning
organisation,
accountable
to the people
we serve

www.afdb.org

